



Inspection report

Date: 21/01/2009	Job N°:	Weather: Dry	Operator: George McMahon	section number: 2	PLR: S.1 X
Present:	Vehicle: KU02 TKV	Camera: FORWARD VIEW	Preset:	Cleaned: Yes	Grade:

Road: KILVAXTER DRIVE	Division:	start MH: S.2
Place: DARNLEY	District:	end MH: S.1
Location: Light road	Tape No.: 001	Total length: 14.3 m

Purpose: Renovation works	Size/Shape: Circular 150
Use: Surface water	Material: Polyvinyl chloride Pipe length:
Catchment:	Lining:
	Category:

Comment: **PRE-SURVEY**

Location details:

1:125	position	code	observation	grade
Depth: 2.12				
	0.40	ST	Start of Survey	0
	0.40	MH	Manhole Remark: S.2	0
	0.40	WL	Water level, 10 % height/diameter	0
	0.80	LR	Line of Sewer deviates right, Remark: SLIGHT	0
	0.80	WL	Water level, 5 % height/diameter	0
	3.50	H	Hole in sewer from 06 to 07 o'clock	4
	11.20	JN	Junction at 12 o'clock, dia 150 mm	0
	14.00	FC	Circumferential Fracture, from 09 to 04 o'clock	3
	14.20	H	Hole in sewer from 06 to 09 o'clock	4
	14.30	GO	General Observation, Remark: PIPE DISPLACED AT HOLE	0
	14.30	SA	Survey abandoned, Remark: UNABLE TO PASS DISPLACEMENT	0

Inspection photos

Place: DARNLEY	Road: KILVAXTER DRIVE	Date: 21/01/2009	section number: 2	PLR: S.1 X
--------------------------	---------------------------------	----------------------------	-----------------------------	----------------------



Photo: 17_6a, Tape No.: 001, 00:01:39
3.5m, Hole in sewer from 06 to 07 o'clock

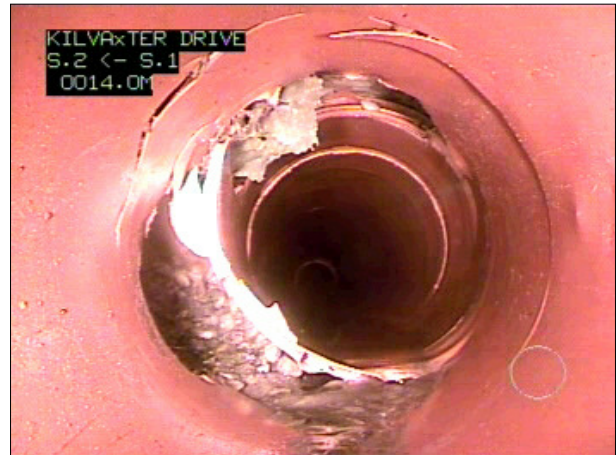


Photo: 19_8a, Tape No.: 001, 00:04:32
14m, Circumferential Fracture, from 09 to 04 o'clock



Photo: 20_9a, Tape No.: 001, 00:05:22
14.2m, Hole in sewer from 06 to 09 o'clock